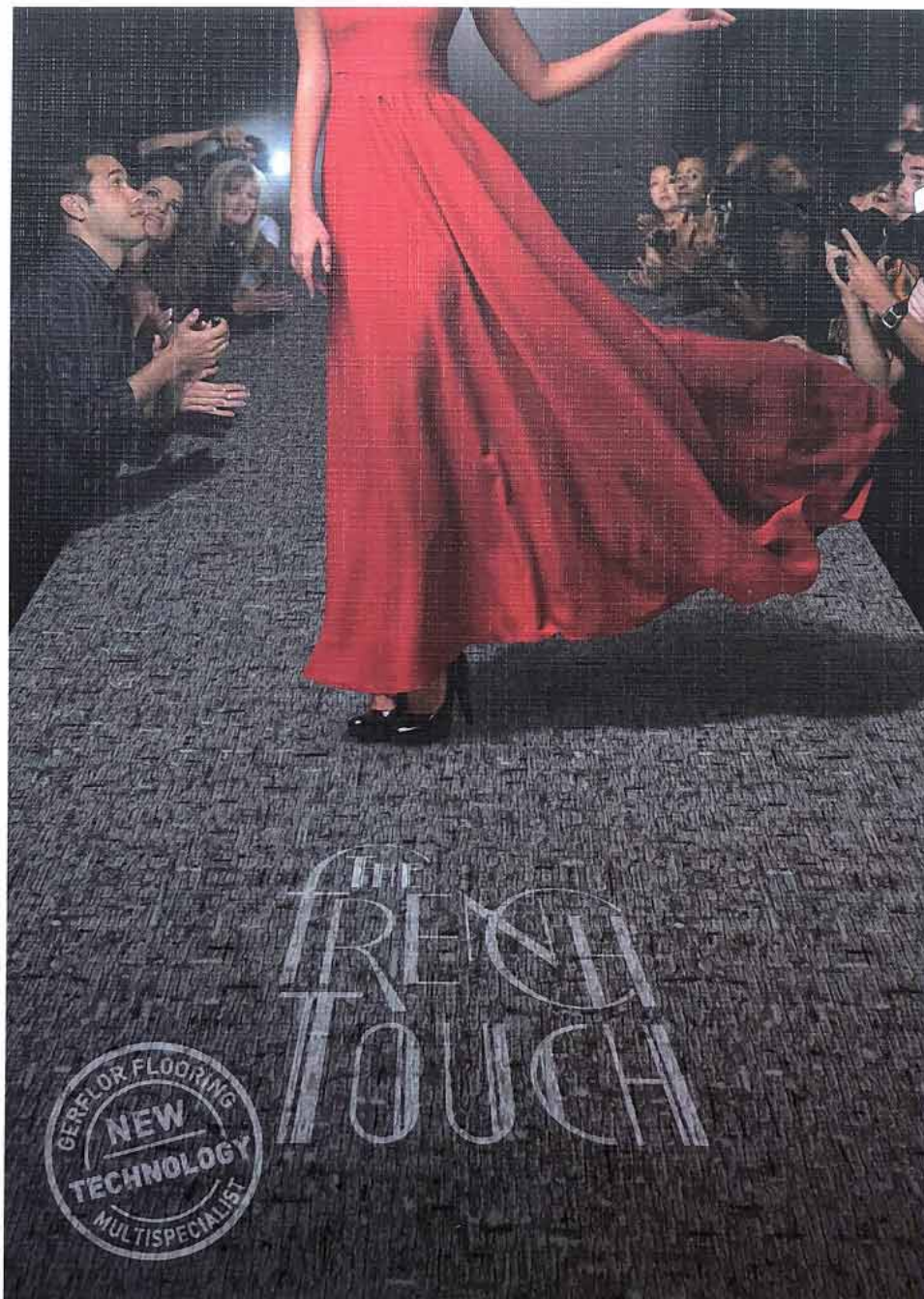


# TARALAY EMOTION™ 柏莱灵动™

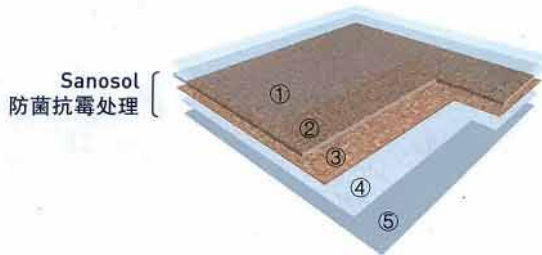
gerflor.com  
gerflor.cn



**Gerflor**<sup>®</sup>  
theflooringgroup

	34-43	Protocolsol®	Sanosol	100% recyclable
--	-------	--------------	---------	-----------------

## BORGO 博格/ COUTURE 特迪/ PANAME 灰岩/ WOOD 木纹



- ① Protocolsol® special maintenance treatment  
Protocolsol® 特殊维护处理
- ② Transparent wear layer 透明耐磨层
- ③ Printed design 印刷设计层
- ④ Fiber glass reinforced layer 玻璃纤维加强层
- ⑤ Compact back layer 致密背层

Protocolsol® special maintenance treatment with excellent resistance to scratching, scuffing & easy cleaning.  
Protocolsol® 特殊维护处理，卓越的抗刮痕性及耐鞋底刮擦性能，极易清洁保养。

Transparent wear layer with printed designing, highest durability.  
透明耐磨层，印刷花纹设计，经久耐用。

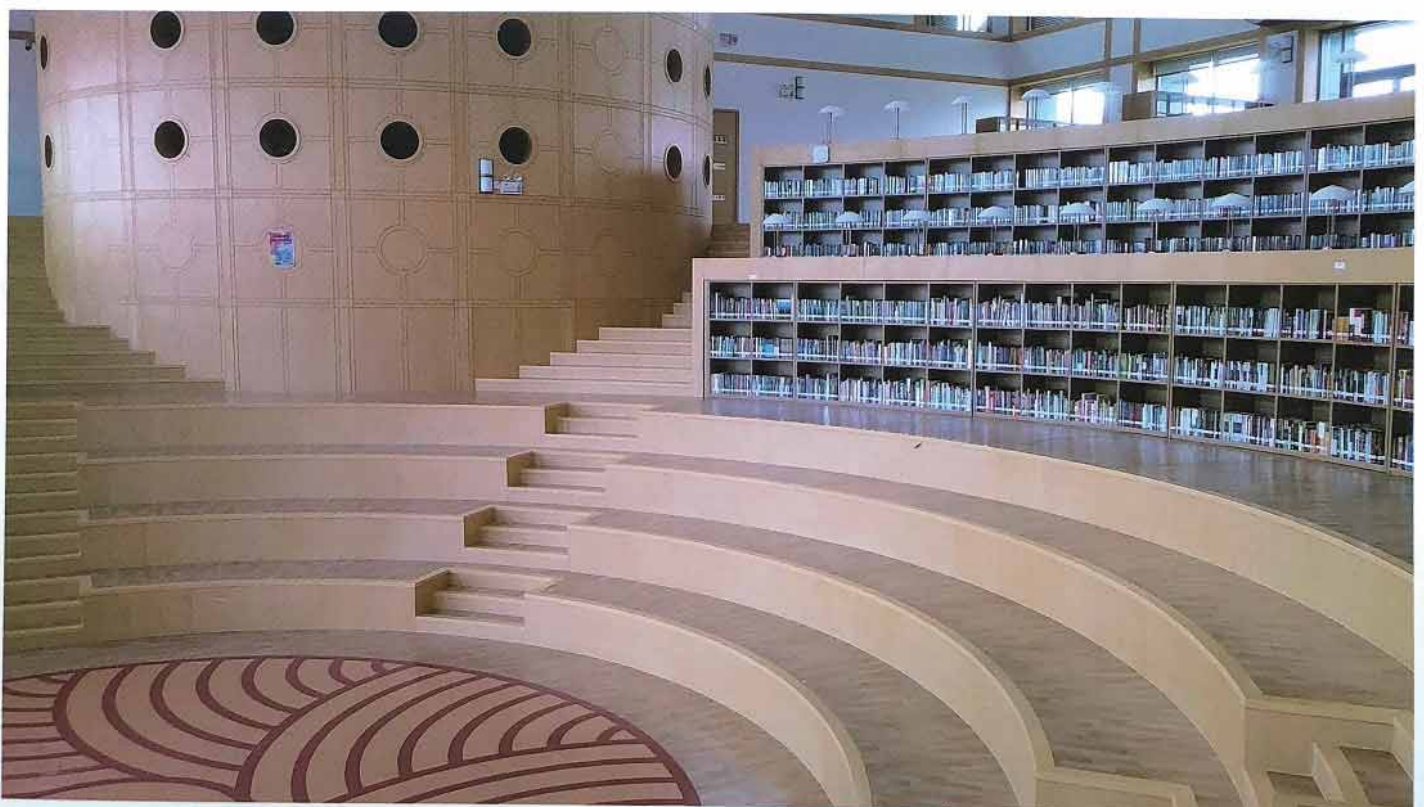
Compact backing with fiber glass reinforced layer. High resistance to static and dynamic indentation under rolling loads, and excellent dimensional stability.  
玻璃纤维加强层及致密背层，优异的耐压痕性能，可抵抗静、动滚轮载荷，尺寸稳定不易变形。

Sanosol treated throughout the thickness to prevent bacterial and fungicidal contamination.  
经过Sanosol对地板进行全厚度处理，以防止细菌和霉菌污染。

No DOP, no heavy-metal, no benzene, no formaldehyde & 100% compliant with REACH, friendly to health and environment.  
无DOP、无重金属、无苯、无甲醛，100%符合欧盟REACH法规，健康环保。

Recommended for high traffic area in education, office, retail, hospital and institutional buildings.  
适用于人流量较大的教育、办公、零售、医疗和公共建筑等领域。

Compact sheet, without foam backing 致密卷材，无泡沫背层



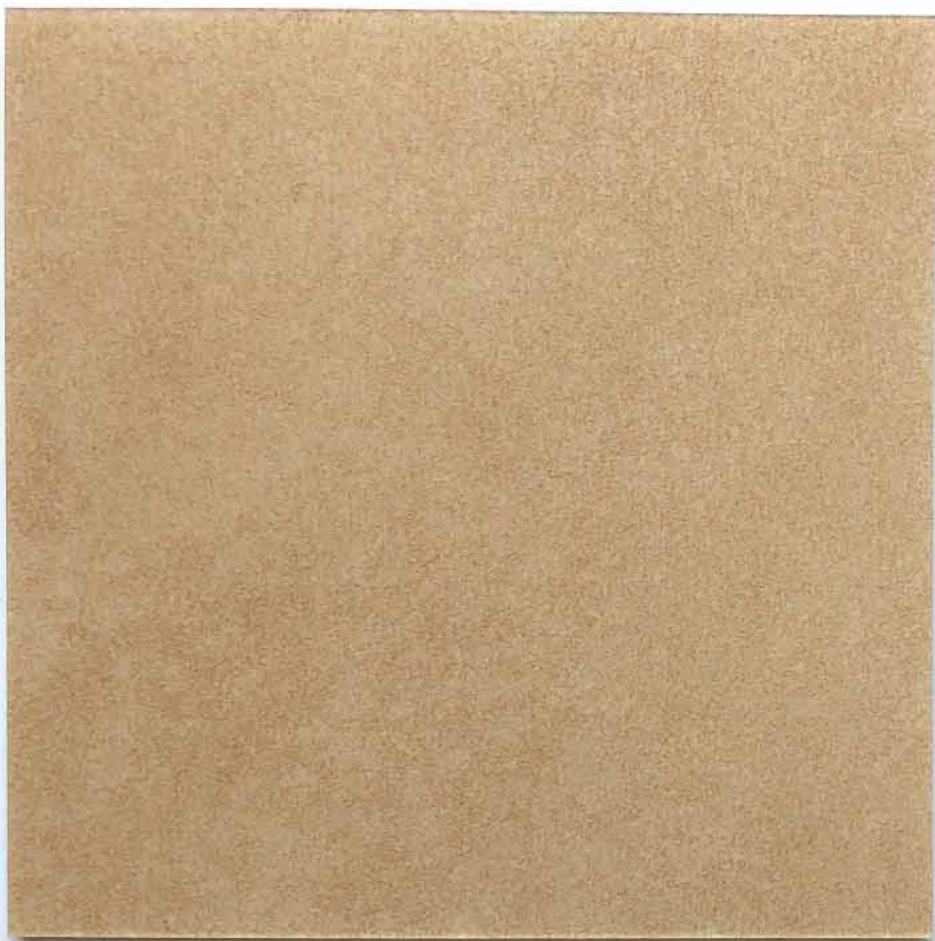
THE  
FRENCH  
TOUCH



0808 Ocre



0802 Light Grey



0807 Yellow



0805 Brown



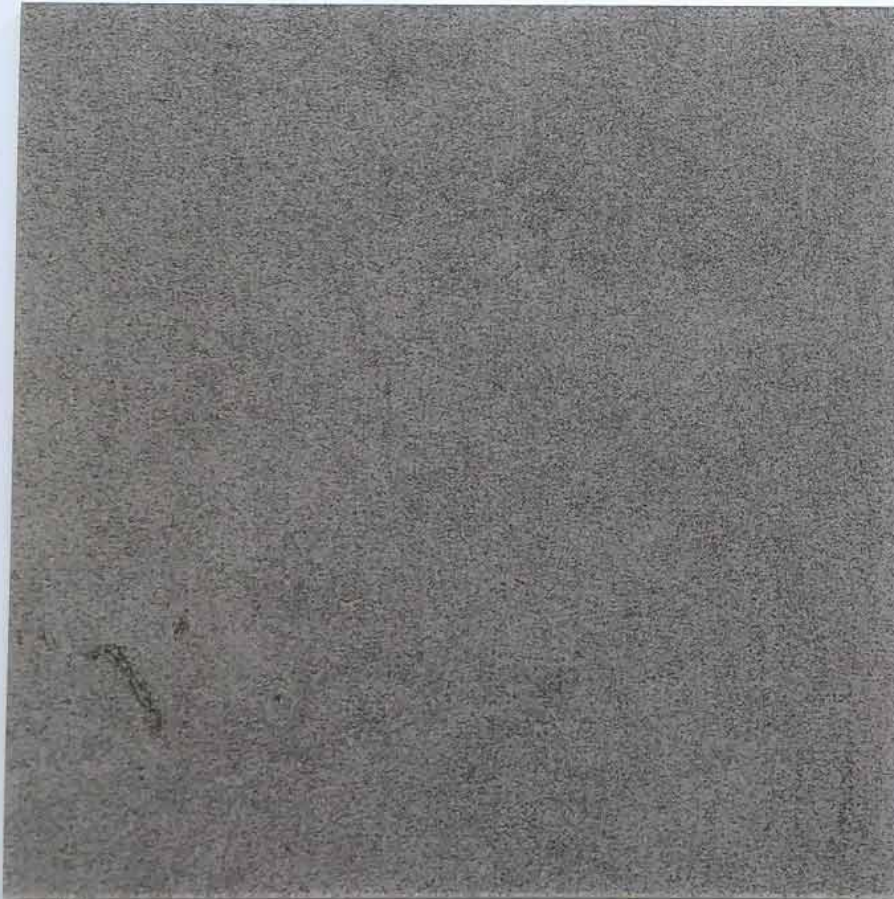
0801 Sable



0809 Clay



0810 Jade



0804 Slate



0811 Calaité



0806 Anthracite

# TARALAY EMOTION™ 柏莱灵动™



TARALAY EMOTION™ BORG / COUTURE / PANAME / WOOD is a multilayered compact vinyl floor covering, available in 2m width sheet, with a group T wear rating. The product comprises a printed design protected by a transparent wear layer, and a compact backing with fiber glass reinforced layer, which resists static and dynamic indentation under rolling loads and provides excellent dimensional stability.

TARALAY EMOTION™ BORG / COUTURE / PANAME / WOOD is treated with Protecsol® special maintenance treatment with excellent resistance to scratching, scuffing & easy cleaning, no wax for life, and Sanosol treated throughout the thickness to prevent bacterial and fungicidal contamination. It has no DOP, no heavy-metal, no benzene, no formaldehyde & 100% compliant with REACH, which is friendly to health and environment, recommended for high traffic area in education, office, retail hospital and institutional buildings.

柏莱灵动™ 博格 / 特迪 / 灰岩 / 木纹 是多层致密PVC地面材料, 可供2米宽规格的卷材, 耐磨等级为T级。表面花纹图案在透明耐磨层的保护之下经久不变。玻璃纤维加强层及致密背层使产品具有优异的耐压性能, 可抵抗静、动滚轮载荷, 尺寸稳定不易变形。

柏莱灵动™ 博格 / 特迪 / 灰岩 / 木纹 经过Protecsol® 特殊维护处理以及Sanosol抗菌防霉处理, 卓越的抗刮痕性及耐鞋底刮擦性能, 极易清洁保养, 终生免打蜡。该产品无DOP, 无重金属、无苯、无甲醛, 100%符合欧盟REACH法规, 健康环保, 适用于人流量较大的教育、办公、零售、医疗和公共建筑等领域。

**TARALAY EMOTION™ 柏莱灵动™**  
BORG / COUTURE / PANAME / WOOD  
博格 / 特迪 / 灰岩 / 木纹

## DESCRIPTION 规格

Total thickness 总厚度	ISO 24346 [EN 428]	mm	2.0	2.6
Thickness of wearlayer 耐磨层厚度	ISO 24340 [EN 429]	mm	0.7	0.7
Weight 重量	ISO 23997 [EN 430]	g/m <sup>2</sup>	2800	3800
Width of sheet 卷宽	ISO 24341 [EN 426]	cm	200	200
Length of sheet 卷长	ISO 24341 [EN 426]	lm	20	15

## CLASSIFICATION 类别

Norm / Product specification 产品规范	-	-	ISO 10582 [EN 649]	ISO 10582 [EN 649]
European classification 产品分级	ISO 10874 [EN 685]	class	34-43	34-43
Fire rating 防火等级	EN 13501-1	class	Bfl-s1	Bfl-s1
	GB 8624-2012	class	B1(B-s1, t0)	B1(B-s1, t0)
Toxic testing 有毒有害物质检测	GB 18586-2001	-	合格	合格
Static electrical propensity 抗静电性	EN 1815	kV	< 2	< 2
Slip resistance wet 防滑湿性	DIN 51 130	class	R9	R9

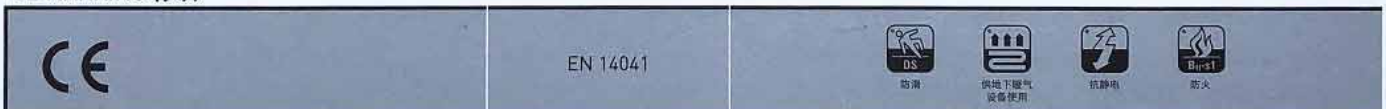
## PERFORMANCES 性能

Wear resistance 耐磨性	EN 660.2	mm <sup>3</sup>	≤ 2	≤ 2
Wear group 耐磨等级	EN 649	group	T	T
Type binder content 粘合物分级	ISO 10582	type	I	I
Dimensional stability 尺寸稳定性	ISO 23999 [EN 434]	%	≤ 0.4	≤ 0.4
Residual indentation 残余凹陷度	ISO 24343-1 [EN 433]	mm	≤ 0.1	≤ 0.1
Castor chair test 椅子脚轮测试	ISO 4918 [EN 425]	-	OK	OK
Thermal conductivity 热传导性	ISO 10456 [EN 12524]	W/(m.K)	0.25	0.25
Colour fastness 颜色稳定性	ISO 105 - B02	degree	≥ 6	≥ 6
Chemical product resistance 抗化学性	ISO 26987 [EN 423]	-	OK	OK
Anti-bacterial and fungicidal treatment 抗菌防霉处理	-	-	Sanosol	Sanosol
Special maintenance treatment 特殊维护处理	-	-	Protecsol®	Protecsol®
Anti-bacterial activity 抑菌性能 [E.coli - S.aureus - MRSA 大肠杆菌和金黄色葡萄球菌] <sup>(1)</sup>	ISO 22196	-	> 99 % inhibits growth 抑菌率	> 99 % inhibits growth 抑菌率

## ENVIRONMENT / INDOOR AIR QUALITY 环保 / 室内空气质量

TVOC <sub>(2)</sub> after 28 days 28天后TVOC排放量	ISO 16000 - 6	µg/m <sup>3</sup>	< 100	< 100
Certification 证书	-	-	Floorscore®	Floorscore®

## CE MARKING 标识



[1] The implementation of an effective cleaning regime is the most important defence against infections. 实施有效的清洁方法是抗感染最重要的防御措施。

[2] TVOC 即挥发性有机化合物总排放量

## INSTALLATION 安装

Installation should be carried out in accordance with local standards. Subfloor should be smooth, hard, clean and dry prior to laying. Where applicable the subfloor must incorporate an effective Damp Proof Membrane. The material must be allowed to acclimatize 24 hours before installation in a room temperature of between 18-24°C. All sea-ms must be hot welded using Gerflor® matching welding rod.

应按当地标准进行安装。铺设地板前, 应确保地面平滑、坚硬、清洁和干燥。如有需要, 应在地面上铺设一层有效的防潮薄膜。安装地板前, 应提前24小时将地板材料放置在18-24°C室温内适应环境。所有接缝口应选用Gerflor®之配套焊条热焊处理。

## MAINTENANCE 维护

No acrylic emulsion (wax) is needed for life. Maintenance should be carried out regularly to retain in the appearance and durability of the floor. The floorcovering should be maintained with regular sweeping and damp mopping using a neutral cleanser. More intense cleaning should be carried out using a fine spray cleaning pad under a floor machine, or for larger areas combined machine cleaning.

终生无需使用丙烯酸乳液(蜡水)。定期进行维护以使其保持外观整洁和耐用性。定期清扫和使用中性清洁剂湿擦来维护地板。或者使用具有精细喷雾垫的清洗机进行大面积地面的清洗。

⚠ Rubber leaves indelible stains on vinyl flooring: do not use mats with rubber backing and replace tubular furniture feet with those made of PVC or polyamide. 橡胶会在乙烯基地板上留下无法擦拭的污点: 请勿在PVC地板上使用橡胶背衬, 用PVC或者聚酰胺(尼龙)材质替代橡胶家具背衬。